

WADD

Denpasar Ngurah Rai Intl

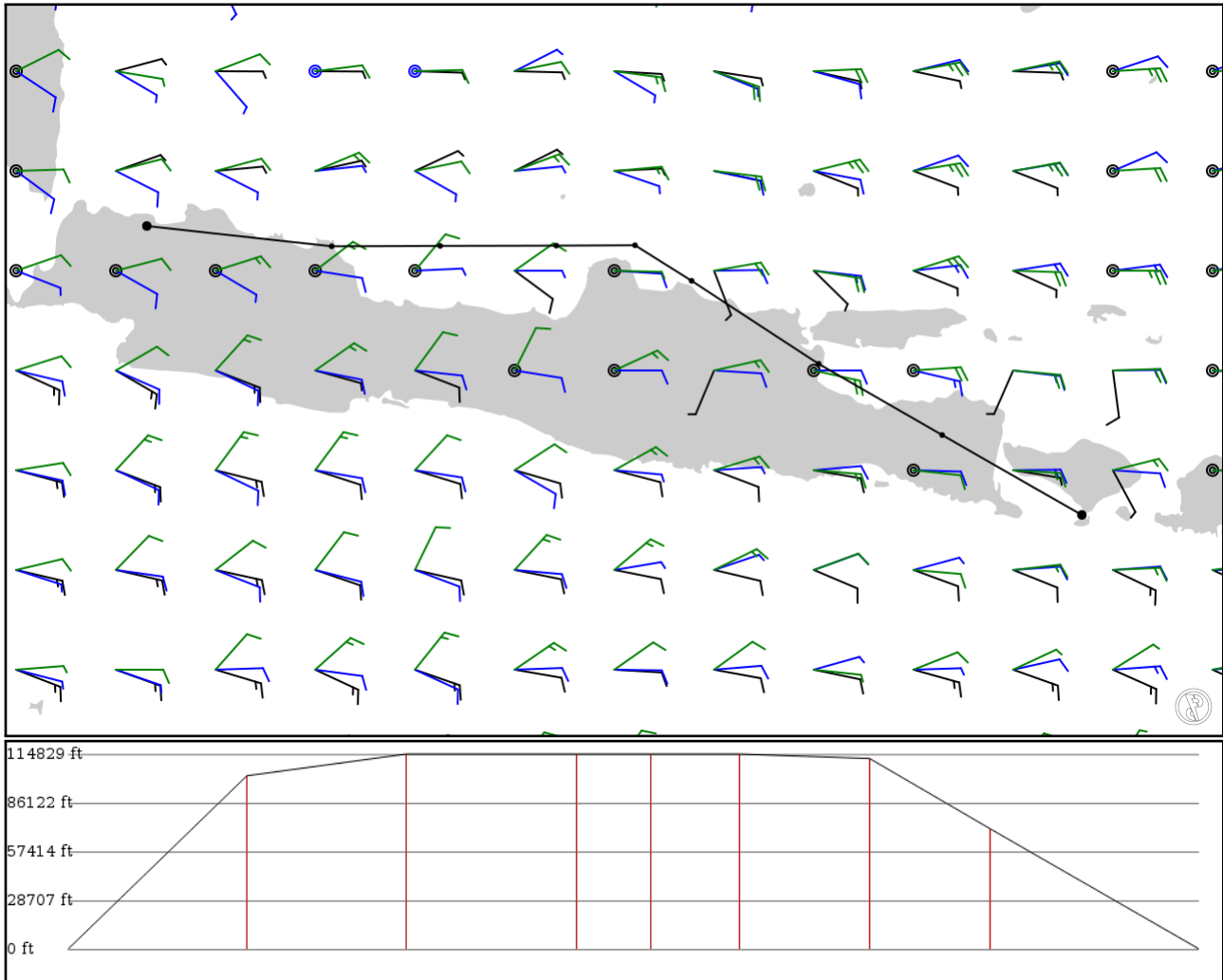
WIII

Jakarta Soekarno-Hatta Intl

2024/06/07 2213Z

WADD RABOL W33 SBR M766 IMU WIII

549.37 nm / 1017.44 km



Notes

Basic altitude profile:

- Ascent Rate: 2500ft/min
- Ascent Speed: 250kts
- Cruise Altitude: 35000ft
- Cruise Speed: 420kts
- Descent Rate: 1500ft/min
- Descent Speed: 250kts

Options:

- Use NATs: yes
- Use PACOTS: yes
- Use low airways: no
- Use high airways: yes

Route

Ident Type	Via	Lat Lon	Alt	Dist (nm)	Name
WADD APT	-	-8.74840 115.16700	0 ft 0 m	-	Denpasar Ngurah Rai Intl
RABOL FIX	-	-8.02142 113.89600	31,100 ft 9,479 m	87	-
SBR VOR	W33 AWY-HI	-7.37394 112.77100	35,000 ft 10,668 m	77	SURABAYA
LASEM FIX	M766 AWY-HI	-6.61833 111.61500	35,000 ft 10,668 m	82	-
CUCUT FIX	M766 AWY-HI	-6.29500 111.10000	35,000 ft 10,668 m	36	-
MADIN FIX	M766 AWY-HI	-6.29833 110.38300	35,000 ft 10,668 m	42	-
KIDET FIX	M766 AWY-HI	-6.30083 109.32700	34,200 ft 10,424 m	63	-
IMU VOR	M766 AWY-HI	-6.30420 108.33900	21,600 ft 6,584 m	58	INDRAMAYU
WIII APT	-	-6.11981 106.65700	0 ft 0 m	101	Jakarta Soekarno-Hatta Intl

WADD

Region: INDONESIA
Timezone: ASIA/MAKASSAR
Runways: 1

Elevation: 14 ft / 4 m
Location: -8.748400 115.167000
Magnetic Var: 0.605 E

METAR

WADD 072130Z 12004KT 9999 BKN016 25/25 Q1011 NOSIG

TAF

TAF TAF WADD 071700Z 0718/0818 12012KT 9999 SCT016 TEMPO 0718/0722 5000 RA FEW014CB BKN014

Frequencies

REC - 126.20 MHz - ATIS
TWR - 118.10 MHz - NGURAH TOWER

GND - 118.80 MHz - NGURAH GROUND
APP - 119.70 MHz - BALI DIRECTOR

Runways

Ident	Width	Length	Bearing (true) (mag)	Surface	Threshold Offset	Overrun Length
09	148 ft	9,828 ft	87.66	ASPHALT	0 ft	0 ft
	45 m	2,996 m	87.06		0 m	0 m
27	148 ft	9,828 ft	267.66	ASPHALT	0 ft	0 ft
	45 m	2,996 m	267.05		0 m	0 m

Approach Nav aids

Runway	Type	Ident	Frequency	Range	Bearing (true) (mag)	Slope	Elevation
27	DME	IDPS	110.30 MHz	18 nm	-	-	14 ft
				33 km	-		14 m
27	LOC-ILS	IDPS	110.30 MHz	18 nm	267.70	-	10 ft
				33 km	267.10		10 m
27	GS	IDPS	110.30 MHz	10 nm	268.41	3.00	12 ft
				19 km	267.81		12 m

WIII

Region: INDONESIA
Timezone: ASIA/JAKARTA
Runways: 3

Elevation: 34 ft / 10 m
Location: -6.119810 106.657000
Magnetic Var: 0.528 E

METAR

WIII 072200Z 16005KT 3000 HZ FEW022 26/23 Q1010 NOSIG

TAF

TAF WIII 071700Z 0718/0900 26005KT 5000 HZ SCT020 BECMG 0723/0801 15010KT 8000 NSW

Frequencies

REC - 126.85 MHz - ATIS	CLD - 121.95 MHz -
CLD - 124.25 MHz -	SOEKARNO-HATTA CLEARANCE DELIVERY
SOEKARNO-HATTA CLEARANCE DELIVERY	CLD - 125.15 MHz -
GND - 121.60 MHz - SOEKARNO-HATTA GROUND	SOEKARNO-HATTA CLEARANCE DELIVERY
GND - 128.85 MHz - SOEKARNO-HATTA GROUND	GND - 121.00 MHz - SOEKARNO-HATTA GROUND
TWR - 118.20 MHz - SOEKARNO-HATTA TOWER	GND - 128.95 MHz - SOEKARNO-HATTA GROUND
TWR - 119.30 MHz - SOEKARNO-HATTA TOWER	TWR - 118.75 MHz - SOEKARNO-HATTA TOWER
APP - 124.20 MHz - JAKARTA ARRIVAL	TWR - 120.25 MHz - SOEKARNO-HATTA TOWER
APP - 119.75 MHz - JAKARTA DIRECTOR	APP - 125.45 MHz - JAKARTA ARRIVAL
APP - 124.55 MHz - JAKARTA DIRECTOR	APP - 123.75 MHz - JAKARTA DIRECTOR
APP - 125.05 MHz - JAKARTA DIRECTOR	APP - 124.95 MHz - JAKARTA DIRECTOR
APP - 124.15 MHz - JAKARTA RADAR	APP - 127.90 MHz - JAKARTA DIRECTOR
APP - 125.35 MHz - JAKARTA RADAR	APP - 124.35 MHz - JAKARTA RADAR
APP - 127.95 MHz - JAKARTA RADAR	APP - 126.45 MHz - JAKARTA RADAR
	APP - 130.10 MHz - JAKARTA RADAR

Runways

Ident	Width	Length	Bearing (true) (mag)	Surface	Threshold Offset	Overrun Length
06	150 ft	8,202 ft	68.13	ASPHALT	328 ft	846 ft
	46 m	2,500 m	67.61		100 m	258 m
24	150 ft	8,202 ft	248.13	ASPHALT	0 ft	0 ft
	46 m	2,500 m	247.60		0 m	0 m
07L	197 ft	11,820 ft	68.15	ASPHALT	0 ft	0 ft
	60 m	3,603 m	67.62		0 m	0 m
25R	197 ft	11,820 ft	248.15	ASPHALT	0 ft	0 ft
	60 m	3,603 m	247.62		0 m	0 m
07R	197 ft	12,015 ft	68.12	ASPHALT	0 ft	0 ft
	60 m	3,662 m	67.59		0 m	0 m
25L	197 ft	12,015 ft	248.12	ASPHALT	0 ft	0 ft
	60 m	3,662 m	247.59		0 m	0 m

Approach Nav aids

Runway	Type	Ident	Frequency	Range	Bearing (true) (mag)	Slope	Elevation
07L	LOC-ILS	ICHL	111.50 MHz	18 nm	68.13	-	21 ft
				33 km	67.60		21 m
07R	LOC-ILS	ICHR	110.50 MHz	18 nm	68.13	-	27 ft
				33 km	67.60		27 m
25L	LOC-ILS	ICGL	111.10 MHz	18 nm	248.12	-	34 ft
				33 km	247.59		34 m

Runway	Type	Ident	Frequency	Range	Bearing (true) (mag)	Slope	Elevation
25R	LOC-ILS	ICGR	110.90 MHz	18 nm	248.13	-	29 ft
				33 km	247.60		29 m
07L	GS	ICHL	111.50 MHz	10 nm	68.25	3.00	29 ft
				19 km	67.72		29 m
07R	GS	ICHR	110.50 MHz	10 nm	68.24	3.00	34 ft
				19 km	67.72		34 m
25L	GS	ICGL	111.10 MHz	10 nm	248.24	3.00	27 ft
				19 km	247.72		27 m
25R	GS	ICGR	110.90 MHz	10 nm	248.25	3.00	21 ft
				19 km	247.72		21 m