

WADD

Denpasar Ngurah Rai Intl

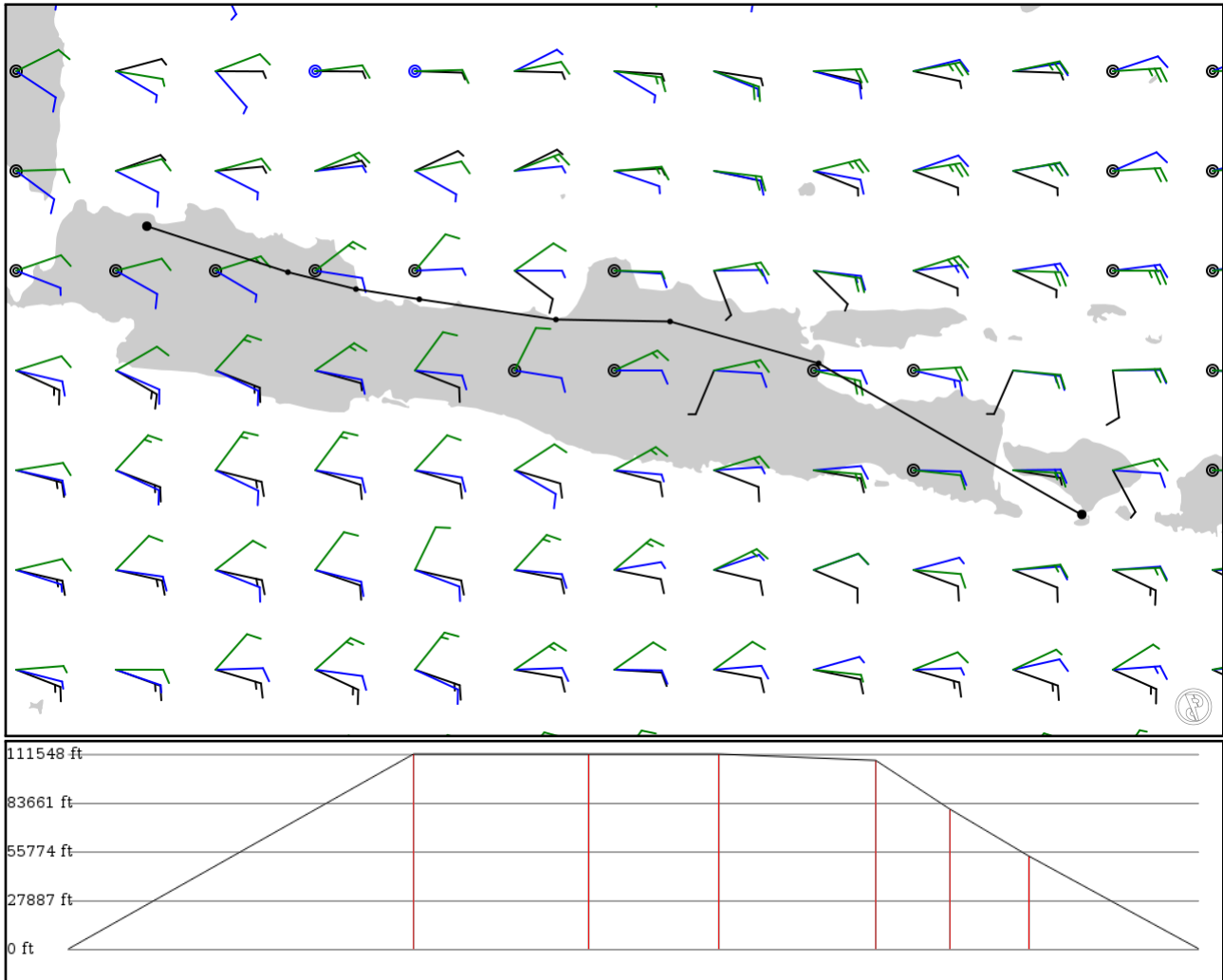
WIII

Jakarta Sukarno-Hatta Intl

2024/05/06 0329Z

WADD BLI **G462** SBR **G461** KASAL WIII

539.05 nm / 998.33 km



Notes

Basic altitude profile:

- Ascent Rate: 1300ft/min
- Ascent Speed: 300kts
- Cruise Altitude: 31000ft
- Cruise Speed: 420kts
- Descent Rate: 1500ft/min
- Descent Speed: 250kts

Options:

- Use NATs: no
- Use PACOTS: no
- Use low airways: yes
- Use high airways: no

Route

Ident Type	Via	Lat Lon	Alt	Dist (nm)	Name
WADD APT	-	-8.74817 115.16717	0 ft 0 m	-	Denpasar Ngurah Rai Intl
BLI VOR	-	-8.75058 115.16331	0 ft 0 m	0	BALI VOR-DME
SBR VOR	G462 AWY-LO	-7.37394 112.77122	34,000 ft 10,363 m	164	SURABAYA VOR-DME
BA NDB	G461 AWY-LO	-6.99264 111.41896	34,000 ft 10,363 m	83	BLORA NDB
ANY VOR	G461 AWY-LO	-6.97472 110.38008	34,000 ft 10,363 m	61	ACHMAD YANI VOR-DME
PIALA FIX	G461 AWY-LO	-6.79036 109.13682	32,900 ft 10,028 m	74	-
CA NDB	G461 AWY-LO	-6.69798 108.55976	24,400 ft 7,437 m	34	CIREBON NDB
KASAL FIX	G461 AWY-LO	-6.54399 107.94058	16,200 ft 4,938 m	38	-
WIII APT	-	-6.12574 106.65640	0 ft 0 m	80	Jakarta Sukarno-Hatta Intl

WADD

Region: INDONESIA
Timezone: ASIA/MAKASSAR
Runways: 1

Elevation: 14 ft / 4 m
Location: -8.748400 115.167000
Magnetic Var: 0.611 E

METAR

WADD 060300Z 12012KT 9999 SCT017 29/25 Q1011 NOSIG

TAF

TAF WADD 052300Z 0600/0700 13010KT 9999 SCT017

Frequencies

REC - 126.20 MHz - ATIS
TWR - 118.10 MHz - NGURAH TOWER

GND - 118.80 MHz - NGURAH GROUND
APP - 119.70 MHz - BALI DIRECTOR

Runways

Ident	Width	Length	Bearing (true) (mag)	Surface	Threshold Offset	Overrun Length
09	148 ft	9,828 ft	87.66	ASPHALT	0 ft	0 ft
	45 m	2,996 m	87.05		0 m	0 m
27	148 ft	9,828 ft	267.66	ASPHALT	0 ft	0 ft
	45 m	2,996 m	267.05		0 m	0 m

Approach Nav aids

Runway	Type	Ident	Frequency	Range	Bearing (true) (mag)	Slope	Elevation
27	DME	IDPS	110.30 MHz	18 nm	-	-	14 ft
				33 km	-		14 m
27	LOC-ILS	IDPS	110.30 MHz	18 nm	267.70	-	10 ft
				33 km	267.09		10 m
27	GS	IDPS	110.30 MHz	10 nm	268.41	3.00	12 ft
				19 km	267.80		12 m

WIII

Region: INDONESIA
Timezone: ASIA/JAKARTA
Runways: 3

Elevation: 34 ft / 10 m
Location: -6.119810 106.657000
Magnetic Var: 0.530 E

METAR

WIII 060300Z VRB03KT 8000 FEW022 32/23 Q1010 NOSIG

TAF

TAF WIII 052300Z 0600/0706 VRB03KT 9000 FEW020 BECMG 0601/0603 03008KT TEMPO 0609/0612 5000 -TSRA FEW018CB BECMG 0700/0706 03008KT

Frequencies

REC - 126.85 MHz - ATIS	CLD - 121.95 MHz -
CLD - 124.25 MHz -	SOEKARNO-HATTA CLEARANCE DELIVERY
SOEKARNO-HATTA CLEARANCE DELIVERY	CLD - 125.15 MHz -
GND - 121.60 MHz - SOEKARNO-HATTA GROUND	SOEKARNO-HATTA CLEARANCE DELIVERY
GND - 128.85 MHz - SOEKARNO-HATTA GROUND	GND - 121.00 MHz - SOEKARNO-HATTA GROUND
TWR - 118.20 MHz - SOEKARNO-HATTA TOWER	GND - 128.95 MHz - SOEKARNO-HATTA GROUND
TWR - 119.30 MHz - SOEKARNO-HATTA TOWER	TWR - 118.75 MHz - SOEKARNO-HATTA TOWER
APP - 124.20 MHz - JAKARTA ARRIVAL	TWR - 120.25 MHz - SOEKARNO-HATTA TOWER
APP - 119.75 MHz - JAKARTA DIRECTOR	APP - 125.45 MHz - JAKARTA ARRIVAL
APP - 124.55 MHz - JAKARTA DIRECTOR	APP - 123.75 MHz - JAKARTA DIRECTOR
APP - 125.05 MHz - JAKARTA DIRECTOR	APP - 124.95 MHz - JAKARTA DIRECTOR
APP - 124.15 MHz - JAKARTA RADAR	APP - 127.90 MHz - JAKARTA DIRECTOR
APP - 125.35 MHz - JAKARTA RADAR	APP - 124.35 MHz - JAKARTA RADAR
APP - 127.95 MHz - JAKARTA RADAR	APP - 126.45 MHz - JAKARTA RADAR
	APP - 130.10 MHz - JAKARTA RADAR

Runways

Ident	Width	Length	Bearing (true) (mag)	Surface	Threshold Offset	Overrun Length
06	150 ft	8,202 ft	68.13	ASPHALT	328 ft	846 ft
	46 m	2,500 m	67.61		100 m	258 m
24	150 ft	8,202 ft	248.13	ASPHALT	0 ft	0 ft
	46 m	2,500 m	247.60		0 m	0 m
07L	197 ft	11,820 ft	68.15	ASPHALT	0 ft	0 ft
	60 m	3,603 m	67.62		0 m	0 m
25R	197 ft	11,820 ft	248.15	ASPHALT	0 ft	0 ft
	60 m	3,603 m	247.62		0 m	0 m
07R	197 ft	12,015 ft	68.12	ASPHALT	0 ft	0 ft
	60 m	3,662 m	67.59		0 m	0 m
25L	197 ft	12,015 ft	248.12	ASPHALT	0 ft	0 ft
	60 m	3,662 m	247.59		0 m	0 m

Approach Nav aids

Runway	Type	Ident	Frequency	Range	Bearing (true) (mag)	Slope	Elevation
07L	LOC-ILS	ICHL	111.50 MHz	18 nm	68.13	-	21 ft
				33 km	67.60		21 m
07R	LOC-ILS	ICHR	110.50 MHz	18 nm	68.13	-	27 ft
				33 km	67.60		27 m
25L	LOC-ILS	ICGL	111.10 MHz	18 nm	248.12	-	34 ft
				33 km	247.59		34 m

Runway	Type	Ident	Frequency	Range	Bearing (true) (mag)	Slope	Elevation
25R	LOC-ILS	ICGR	110.90 MHz	18 nm	248.13	-	29 ft
				33 km	247.60		29 m
07L	GS	ICHL	111.50 MHz	10 nm	68.25	3.00	29 ft
				19 km	67.72		29 m
07R	GS	ICHR	110.50 MHz	10 nm	68.24	3.00	34 ft
				19 km	67.71		34 m
25L	GS	ICGL	111.10 MHz	10 nm	248.24	3.00	27 ft
				19 km	247.71		27 m
25R	GS	ICGR	110.90 MHz	10 nm	248.25	3.00	21 ft
				19 km	247.72		21 m