

# ZSAM

Xiamen - Gaoqi Intl.

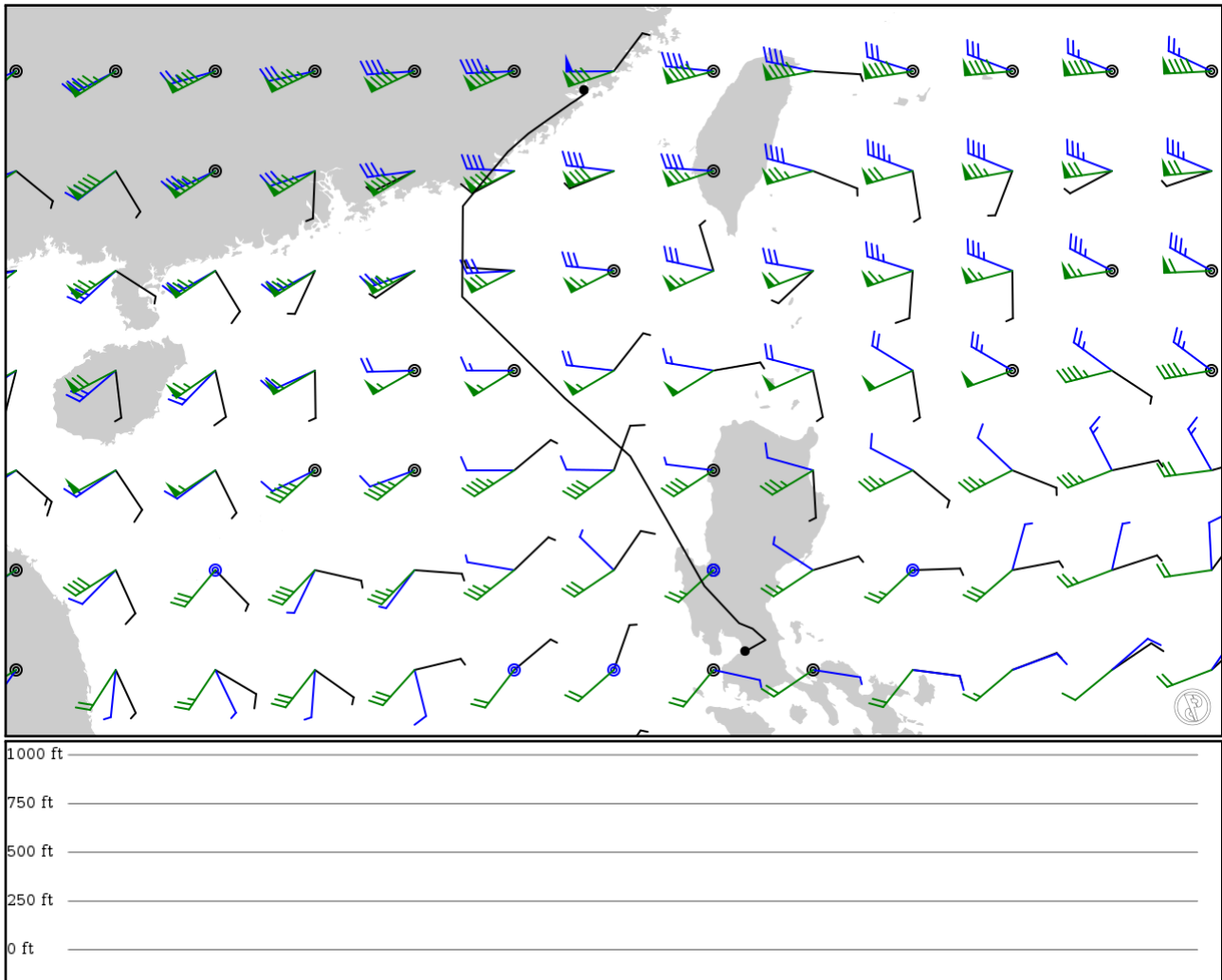
# RPLL

Ninoy Aquino Intl

2024/05/10 0238Z

ZSAM AM122 AM124 AM121 AM125 IKATA SWA BEBEM DOTMI SAMMI GRUPA GRUPA MUMOT AVMUP TAREM JERIC  
GARAY BANGI MIA RPLL

787.78 nm / 1458.96 km



## Notes

Requested: ZSAM AM122 AM124 AM121 AM125 IKATA SWA BEBEM DOTMI SAMMI GRUPA NOMAN GRUPA MUMOT AVMUP TAREM JERIC GARAY

## Route

Ident Type	Via	Lat Lon	Alt	Dist (nm)	Name
ZSAM	-	24.54420	0 ft	-	Xiamen - Gaoqi Intl.
APT	-	118.12800	0 m	-	
AM122	-	24.50110	0 ft	4	-
FIX	-	118.18600	0 m	-	-
AM124	-	24.44970	0 ft	4	-
FIX	-	118.11500	0 m	-	-
AM121	-	24.35420	0 ft	9	-
FIX	-	117.98100	0 m	-	-
AM125	-	24.30000	0 ft	5	-
FIX	-	117.89500	0 m	-	-
IKATA	-	23.76500	0 ft	52	-
FIX	-	117.13700	0 m	-	-
SWA	-	23.44000	0 ft	28	SHANTOU VOR-DME
DME	-	116.77000	0 m	-	
BEBEM	-	22.95000	0 ft	37	-
FIX	-	116.36000	0 m	-	-
DOTMI	-	22.71830	0 ft	17	-
FIX	-	116.16800	0 m	-	-
SAMMI	-	22.46670	0 ft	18	-
FIX	-	115.96200	0 m	-	-
GRUPA	-	20.84560	0 ft	97	-
FIX	-	115.95000	0 m	-	-
GRUPA	-	20.84560	0 ft	0	-
FIX	-	115.95000	0 m	-	-
MUMOT	-	19.02860	0 ft	150	-
FIX	-	117.79000	0 m	-	-
AVMUP	-	17.99330	0 ft	91	-
FIX	-	118.95900	0 m	-	-
TAREM	-	15.67430	0 ft	158	-
FIX	-	120.28600	0 m	-	-
JERIC	-	15.01010	0 ft	53	-
FIX	-	120.90800	0 m	-	-
GARAY	-	14.91230	0 ft	15	-
FIX	-	121.14900	0 m	-	-
BANGI	-	14.70860	0 ft	18	-
FIX	-	121.37900	0 m	-	-
MIA	-	14.50800	0 ft	23	MANILA
VOR	-	121.02200	0 m	-	
RPLL	-	14.51130	0 ft	0	Ninoy Aquino Intl
APT	-	121.01300	0 m	-	

## ZSAM

Region: CHINA  
Timezone: ASIA/SHANGHAI  
Runways: 1

Elevation: 59 ft / 18 m  
Location: 24.544200 118.128000  
Magnetic Var: 4.403 W

## METAR

ZSAM 100200Z 04003MPS 320V110 CAVOK 25/16 Q1018 NOSIG

## TAF

TAF ZSAM 092104Z 1000/1024 08004MPS 8000 SCT040 TX29/1006Z TN21/1021Z

## Frequencies

REC - 126.25 MHz - ATIS  
TWR - 118.25 MHz - XIAMEN TWR

GND - 121.70 MHz - XIAMEN GND  
APP - 121.35 MHz - XIAMEN APP

## Runways

Ident	Width	Length	Bearing (true) (mag)	Surface	Threshold Offset	Overrun Length
05	148 ft	11,163 ft	51.81	ASPHALT	495 ft	125 ft
	45 m	3,402 m	56.22		151 m	38 m
23	148 ft	11,163 ft	231.82	ASPHALT	653 ft	197 ft
	45 m	3,402 m	236.23		199 m	60 m

## Approach Nav aids

Runway	Type	Ident	Frequency	Range	Bearing (true) (mag)	Slope	Elevation
05	DME	IWF	110.30 MHz	18 nm	-	-	85 ft
				33 km	-		85 m
23	DME	IKK	109.70 MHz	18 nm	-	-	85 ft
				33 km	-		85 m
05	LOC-ILS	IWF	110.30 MHz	18 nm	51.44	-	85 ft
				33 km	55.85		85 m
23	LOC-ILS	IKK	109.70 MHz	18 nm	231.94	-	85 ft
				33 km	236.34		85 m
05	GS	IWF	110.30 MHz	10 nm	52.93	3.00	85 ft
				19 km	57.33		85 m
23	GS	IKK	109.70 MHz	10 nm	232.93	3.00	85 ft
				19 km	237.33		85 m

## RPLL

Region: PHILIPPINES  
Timezone: ASIA/MANILA  
Runways: 2

Elevation: 75 ft / 23 m  
Location: 14.511300 121.013000  
Magnetic Var: 2.779 W

## METAR

RPLL 100200Z VRB06KT 9999 FEW025 SCT100 34/25 Q1012 NOSIG RMK A2988

## TAF

TAF RPLL 092300Z 1000/1106 11007KT 9999 FEW025 TX36/1006Z TN29/1021Z TEMPO 1006/1012 FEW025 SCT100

## Frequencies

REC - 126.40 MHz - ATIS	APP - 119.70 MHz - MANILA APPROACH
APP - 121.10 MHz - MANILA APPROACH	APP - 127.70 MHz - MANILA APPROACH
TWR - 118.10 MHz - MANILA TOWER	GND - 121.80 MHz - MANILA GROUND
GND - 121.70 MHz - MANILA RAMP	GND - 128.80 MHz - MANILA RAMP
GND - 123.25 MHz - MANILA RAMP	GND - 121.35 MHz - MANILA RAMP
CLD - 125.10 MHz - MANILA CLEARANCE DELIVERY	

## Runways

Ident	Width	Length	Bearing (true) (mag)	Surface	Threshold Offset	Overrun Length
06	197 ft	11,742 ft	60.15	ASPHALT	545 ft	0 ft
	60 m	3,579 m	62.92		166 m	0 m
24	197 ft	11,742 ft	240.15	ASPHALT	0 ft	0 ft
	60 m	3,579 m	242.93		0 m	0 m
13	144 ft	7,729 ft	134.96	ASPHALT	804 ft	0 ft
	44 m	2,356 m	137.74		245 m	0 m
31	144 ft	7,729 ft	314.96	ASPHALT	0 ft	0 ft
	44 m	2,356 m	317.74		0 m	0 m

## Approach Nav aids

Runway	Type	Ident	Frequency	Range	Bearing (true) (mag)	Slope	Elevation
06	DME	IML	109.10 MHz	18 nm	-	-	50 ft
				33 km	-		50 m
24	DME	IMA	109.90 MHz	18 nm	-	-	50 ft
				33 km	-		50 m
06	LOC-ILS	IML	109.10 MHz	18 nm	60.15	-	75 ft
				33 km	62.93		75 m
24	LOC-ILS	IMA	109.90 MHz	18 nm	240.15	-	75 ft
				33 km	242.93		75 m
06	GS	IML	109.10 MHz	10 nm	60.15	3.01	75 ft
				19 km	62.93		75 m
24	GS	IMA	109.90 MHz	10 nm	240.15	3.06	75 ft
				19 km	242.93		75 m